

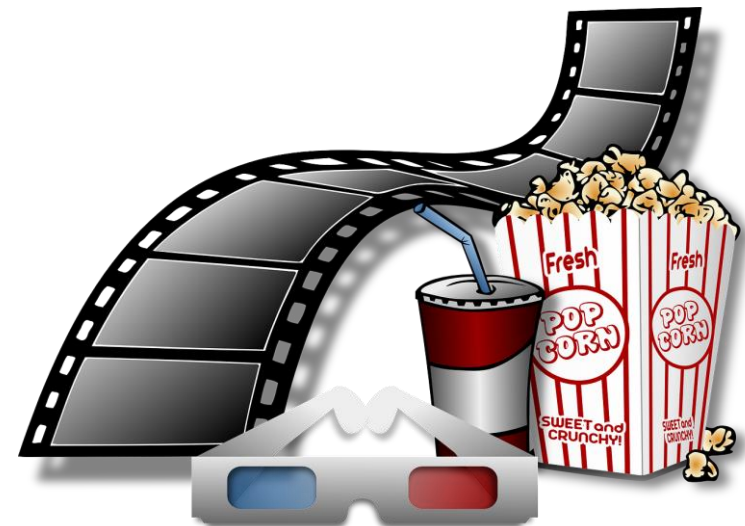
# Carers Forum – Money Matters



# Carers Forum – Money Matters

## Discounts to Local activities

- Better Leisure [Healthwise Physical Activity Referral | Better UK](#)
- Better Leisure [Concessionary Membership | Gym, Swim & Classes | Better](#)
- Cinema [Home - CEA Card](#)
  - The CEA Card is a national card scheme developed for UK cinemas by
  - the UK Cinema Association (UKCA).



# Carers Forum –Money Matters

- Carers Smart - is a Carers Trust Club discount initiative scheme via Carers Trust web page
- Attractions – free entry for carers
  - ❖ Max card
  - ❖ Merlin Annual Pass
  - ❖ National Trust – Essential Companion Card
- Concessions on London Theatre Tickets





# Carers Forum – Money Matters

## Grants are available from:

- Family Fund
- Turn 2 Us
- Carers Trust Fund Grant
- Utility Companies Grants to help with energy debt -More details can be found on useful numbers at the end of the presentation.



## Other grants are available from:

Emergency Support Fund – Greenwich Council. The emergency support scheme was set up by the Royal Borough of Greenwich to provide discretionary support to local residents in difficult times; for example, after a house fire or flood.

- Benevolent funds. There are hundreds of benevolent funds across the UK. These can be linked to trades, professions, unions, geographic localities or any of the armed services.
- They have usually been set up to provide financial support and practical help during difficult times. They may be able to offer help to carers.

# Money Matters



- Free TV licence or discounted TV Licence
- [Over 75 TV Licence](#) - If you're aged 74 and over and you, or your partner living at the same address receive Pension Credit, you could get a free licence.
- [Care home residents](#) - If you live in a care home or sheltered accommodation you may be able to pay a discounted fee of £7.50.
- [Blind \(severely sight impaired\)](#) - You can apply for a 50% concession if you can provide evidence. Your licence will also cover anyone who lives with you.



# Money Matters – Funerals

Funeral planning. Money Helper following a link through Gov.uk website:

- The **Money Helper Website** has a lot of practical advice of different types of burials and cremations.
- The cost of burial or cremation can run it to thousands of pounds and whilst we want to remember our loved ones and show them a sign of respect by “giving them a good send off” I am sure they would not want us to get ourselves in to debt.
- If you are on a low income or claim certain benefits you may be entitled to Funeral Expense Payment.

# Money Matters - Funerals

The local council or hospital can arrange a Public Health Funeral if:

- there isn't enough money in the estate to pay for it
- there are no relatives or friends available to arrange the funeral.

**It can be difficult thinking about your loved one dying, but it really is important to plan ahead.**



# Money Matters - ULEZ



- Everyone will be expected to pay the ULEZ charge from 25<sup>th</sup> October 2027 unless your vehicle meets the current ULEZ emission standards.

## What is the Grace Period?

- The Grace Period is from the 29<sup>th</sup> August 2023 until 24<sup>h</sup> October 2027 and means during this time you do not need to pay ULEZ charges.

## Who is eligible?

- Hold a disabled and disabled passenger vehicle tax class –If you do not have a disabled and disabled passenger vehicle tax class you can apply if you receive both Attendance Allowance and hold a blue badge
- If you have a Wheelchair accessible vehicle that doesn't meet the ULEZ emissions standards
- If the vehicle is registered to a disability benefit holder or their nominated driver



# Money Matters - ULEZ



## What to do next?

- Check if your vehicle is exempt from ULEZ charges if you aren't sure ([www.tfl.gov.uk](http://www.tfl.gov.uk))

There is nothing for you to do if your car meets the ULEZ emission standards!

- If your vehicle is already registered to have a Disabled and Disabled Passenger Vehicle tax class you will automatically be exempt and **there is no need to apply**
- Apply for a Disabled and Disabled Passenger Vehicle tax class with the DVLA if you are in receipt of both Attendance Allowance **and** hold a Blue Badge
- Check if your car is eligible for the scrappage scheme if you feel this would be the best option for you
- **For further information look on the TFL website call the ULEZ helpline on 0343 222 2222 and we are always happy to help**

# Useful Websites

- [www.moneyhelper.org.uk](http://www.moneyhelper.org.uk) Tel: 0800 138 7777
- [www.ceacard.co.uk](http://www.ceacard.co.uk) Tel: 01244 526 016
- [www.better.org.uk](http://www.better.org.uk) Tel: 0330 123 1500
- [www.better.org.uk/what-we-offer/activities/healthwise](http://www.better.org.uk/what-we-offer/activities/healthwise)
- [Concessionary Membership | Gym, Swim & Classes | Better](#)
- [www.tvlicensing.co.uk](http://www.tvlicensing.co.uk) Tel: 0300 790 6071
- [www.greenwichcarers.org](http://www.greenwichcarers.org) Tel: 020 8102 9654
- [www.gov.uk](http://www.gov.uk)
- [www.royalgreenwich.gov.uk](http://www.royalgreenwich.gov.uk) Tel: 0330 123 1500
- [www.citizensadvice.org.uk/consumer/energy/energy-supply/get-help-paying-your-bills/grants-and-benefits-to-help-you-pay-your-energy-bills/](http://www.citizensadvice.org.uk/consumer/energy/energy-supply/get-help-paying-your-bills/grants-and-benefits-to-help-you-pay-your-energy-bills/)
- Tel: 080 8278 7965 (Freephone)
- <https://www.moneysavingexpert.com/family/prepaid-funeral-plans/#what>

# Useful Websites

- [www.carers.org](http://www.carers.org) Tel: 0300 772 9600
- [CarerSmart \(NEW\) - Carers Trust](#)
- [Out & About - Bus Passes for Carers | Carers Trust](#) ([www.carers.org/public-transport/buses](http://www.carers.org/public-transport/buses))
- [Out & About - Train Railcards for Disabled | Carers Trust](#) ([www.cares.org/public-transport/trains](http://www.cares.org/public-transport/trains))
- [Merlin Annual Pass Official Site](#) ([www.merlinannualpass.co.uk](http://www.merlinannualpass.co.uk)) & [Merlin - application form](#) ([accesscard.org.uk](http://accesscard.org.uk))
- [www.mymaxcard.co.uk](http://www.mymaxcard.co.uk)
- [Home | National Trust](#) ([www.nationaltrust.org](http://www.nationaltrust.org))
- [www.londontheatretickets.org/concessions/](http://www.londontheatretickets.org/concessions/)
- <https://tfl.gov.uk/modes/driving/ultra-low-emission-zone/check-your-vehicle>

# Charity Grants

- [www.turn2us.org.uk](http://www.turn2us.org.uk) This website has details of grants available
- [www.familyfund.org.uk/grants](http://www.familyfund.org.uk/grants) Can be applied for directly. For families with children under 17 with a disability or life limiting illness.
- [www.carers.org/grants-and-discounts](http://www.carers.org/grants-and-discounts) Grants available from Carers Trust can be applied for by Us at GCC
- Utility Grants – Please check with different energy suppliers.
- Benevolent charities [Membership Directory](#). Or [Turn2us Grants Search](#)

# Energy Debt

- People who are in debt to their energy supplier may be able to get a grant from a charitable trust to help pay it off.
- British Gas Energy Trust. EDF Energy Trust. E.on Energy Fund. npower Energy Fund. Scottish Power Hardship Fund. Shell Energy. Octopus Energy.
- The forms ask for a lot of financial information so may take time to complete.
- It maybe good to speak to an advisor from here or the Citizen Advice.
- You can get a full list on Citizen Advice website.